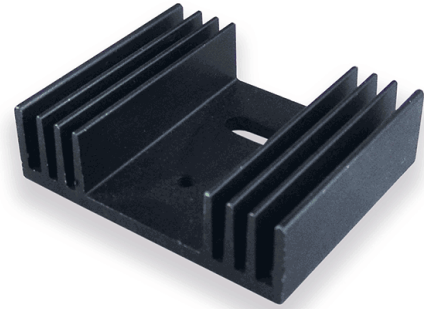


Product Data Sheet Type: PR21/35/SE

Group: HEATSINKS Board Level

For single mounting

Width :	24.7 mm
Height :	12.5 mm
Length :	35 mm
Minimum thermal resistance :	9,5 K/W
For device :	TO 220
Device mounted by :	Screw
Heatsink mounted by :	Srew-On
Surface :	Black Anodised
Material :	AlMgSi0,5



- Extruded heatsink especially for semiconductor case TO220.
- Standard type, ready to be fitted:
 - PR 21/20/SE = with 3,5 mm hole for standing and lying mounting
 - PR 21/35/SE = with M3-thread for lying mounting
 - PR 21/50/SE = with M3-thread for lying mounting
- Standard lengths for base profil PR 22
- Also available in meter lengths.
- Other lengths and machining on request.

