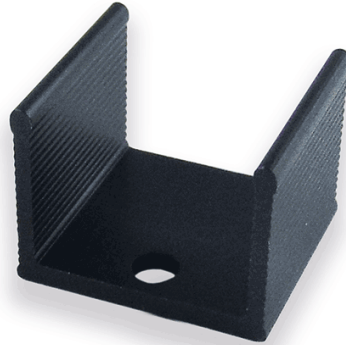


Product features PR 17/15/SE

Semiconductor casing:	TO-220
Semiconductor mounted by:	Screw
Heat sink mounted by:	Srew-On
Finish	Black Anodised
Material	AlMgSi0,5
Width [mm]:	17.0
Height [mm]:	13.0
Length [mm]:	15.0
Min. thermal resistance [K/W]:	28.0



Further information

- U-extruded especially for semiconductor case TO220 or 2xSOT32(TO126). - Standard type, ready to be fitted: - PR 17/15/SE = with 3 mm hole for lying mounting - PR 17/25/SE = with M3-thread for lying mounting - PR 17/35/SE = with M3-thread for lying mounting - PR 17/35II/SE = with 3,0 mm holes for lying mounting and twist protection - PR 17/50/SE = with 3,0 mm holes for double mounting SOT32(TO126) - Also available in meter lengths. - Other lengths and machining on request.

