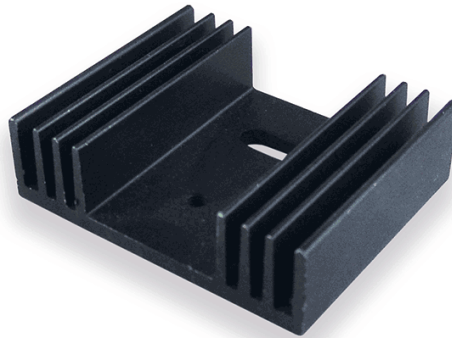


## Product features PR 21/35/SE

---

Semiconductor casing:	TO-220
Semiconductor mounted by:	Screw
Heat sink mounted by:	Srew-On
Finish	Black Anodised
Material	AlMgSi0,5
Width [mm]:	42.7
Height [mm]:	12.5
Length [mm]:	35.0
Min. thermal resistance [K/W]:	9.0



## Further information

---

- Extruded heatsink especially for semiconductor case TO220. - Standard type, ready to be fitted: - PR 21/20/SE = with 3,5 mm hole for standing and lying mounting - PR 21/35/SE = with M3-thread for lying mounting - PR 21/50/SE = with M3-thread for lying mounting - Standard lengths for base profil PR 22 - Also available in meter lengths. - Other lengths and machining on request.

